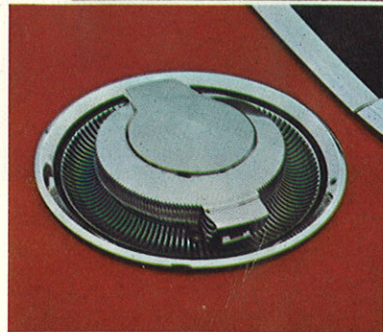
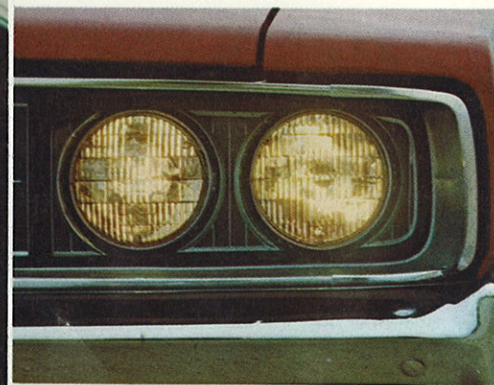


so many wonderful ways to catch **DODGE** *fever*

**1968 DART • CORONET • CHARGER • POLARA • MONACO**



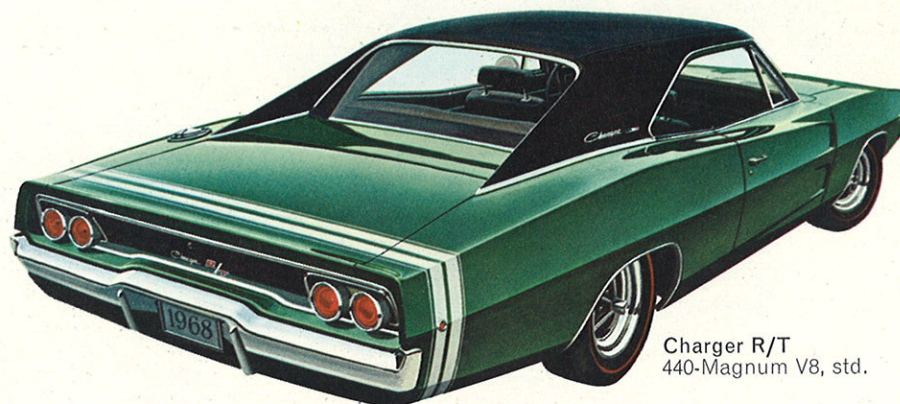


**'68 DODGE CHARGER**





Charger  
318 V8, std.



Charger R/T  
440-Magnum V8, std.

## There may be better-looking cars... but not yet.

Down the road slips a new low shape, and you can feel the Fever setting in. The more you look, the harder you fall. For Charger. Every man's dream. Wearing the shape of tomorrow and a price tag that means you can have it today. Watch it, you're getting Dodge Fever... and there's only one cure. Charger.

The car that doesn't need the chrome treatment to look new. The car that doesn't need the expensive option treatment to treat you properly. The foam-padded bucket seats, the deep carpeting, the disappearing headlights, the clock, the lively V8, and the new safety items are all standard. Charger.

The car that looks like a Mach 2 jet on wheels, that comes fully equipped with buckets up front, room for three in the back, plenty of trunk space, and a lively V8 as standard equipment. Charger... the car that means that even a guy with a family can live a little... and love it. Charger.

The kind of car you always wanted but thought you couldn't afford. Only now you can. And from the clean low sweep of the hood to the flip of the impudent spoiler on the rear deck, you wouldn't change a line of it if you could. One look, and you know. This is your car.

*Charger engines, transmissions, etc.....page 15*  
*Charger options and accessories.....page 17*

### Charger Standard Equipment

318-cu.-in. V8 engine (Charger)  
440-cu.-in. (4-bbl.) Magnum V8 (R/T)  
3-speed manual transmission (Charger)  
3-speed automatic transmission (R/T)  
all-vinyl bucket seats (front)  
deep-pile carpeting  
3-spoke steering wheel, with padded hub and partial horn ring  
heater/defroster  
electric clock  
cigarette lighter  
ashtray light  
choice of 16 standard exterior colors  
front and rear bumper guards  
wheel-lip mouldings  
concealed headlights  
quick-fill fuel filler cap  
glove box lock  
foot-operated parking brake  
"bumblebee" stripes (R/T)  
20-gallon fuel tank  
heavy-duty suspension, including heavy-duty rear springs and sway bar (Charger)  
R/T Handling Package, including special torsion bars, heavy-duty shock absorbers, extra-heavy-duty rear springs and sway bar  
door pockets  
fully instrumented panel

### Specifications

#### Dimensions

Wheelbase.....	117"
Track, front/rear.....	59.5"/59.2"
Overall length.....	208"
Overall width.....	76.6"
Overall height.....	53.2"

#### Brakes

Hydraulic, servo-contact, self-energizing, with bonded linings. Parking brake is foot-operated, hand-released—mechanically actuating shoes on each rear wheel. Charger brakes are self-adjusting; 10" x 2½", front and rear. Charger R/T brakes are manually adjustable; heavy-duty; 11" x 3", front—11" x 2½", rear.

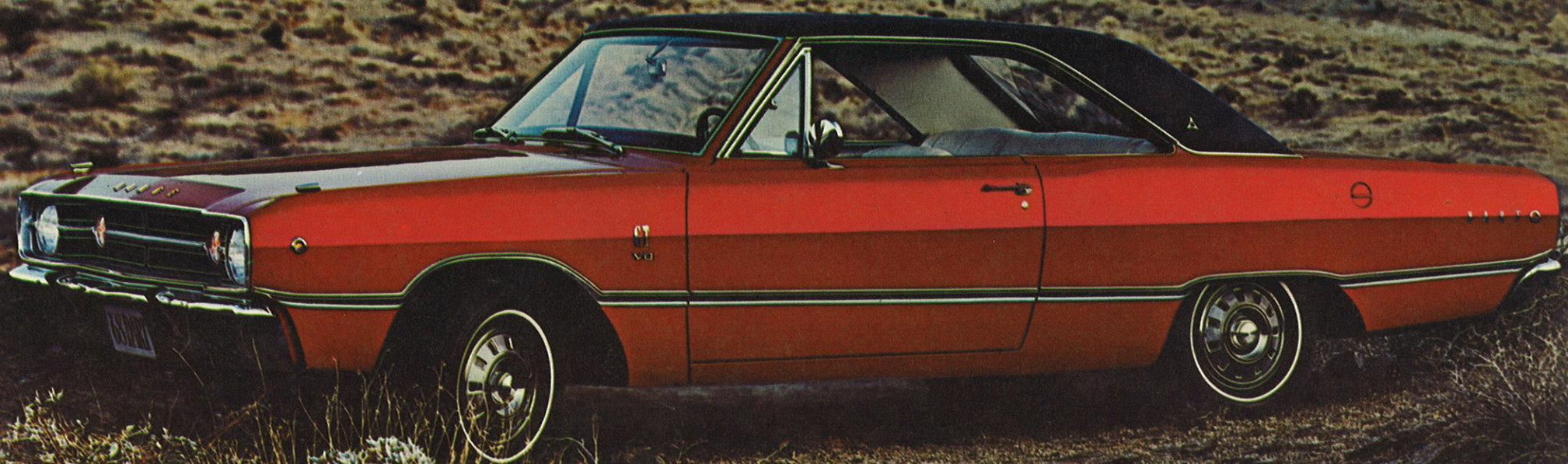
#### Tires

Charger, 7.35 x 14, 5.5 JK wheels. Charger R/T, F70-14, wide-tread, 5.5 JK wheels.

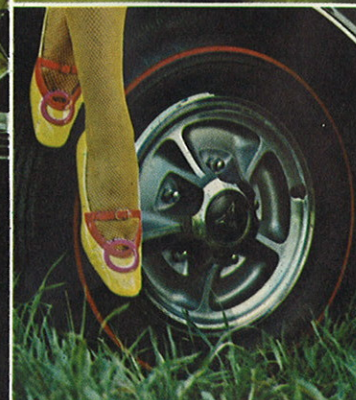
#### Electrical System

Battery: 12-volt, 6-cell. 48-amp-hr (318 V8). 59-amp-hr (383 V8s). 70-amp-hr (Magnum and Hemi V8s). Alternator: 37-amp, standard.





## '68 DODGE DART



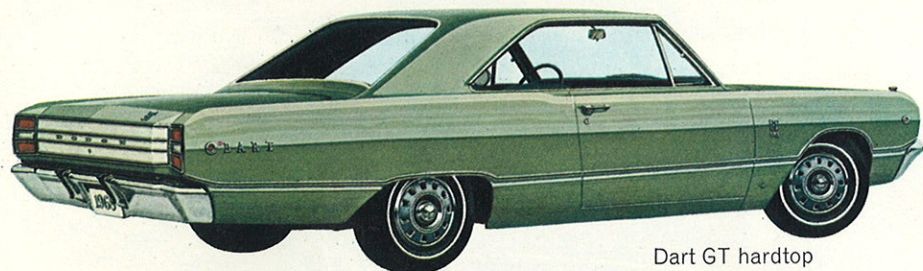




Dart GTSport convertible  
340 (4-bbl.) V8 power standard



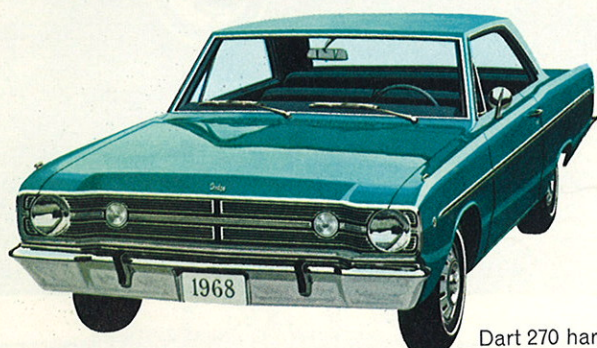
Dart GTSport hardtop  
340 (4-bbl.) V8 power standard



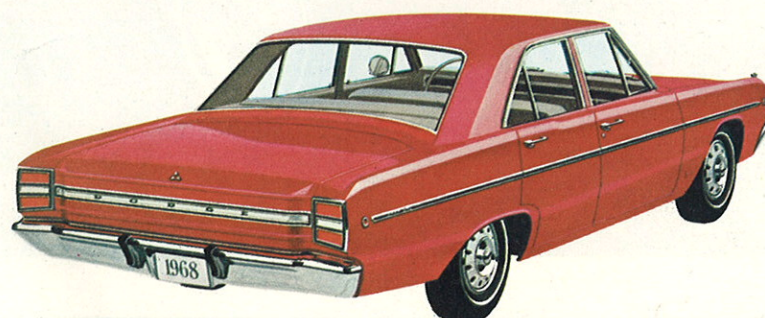
Dart GT hardtop



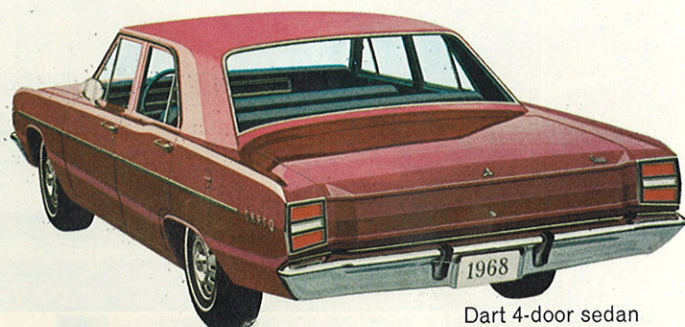
Dart GT convertible



Dart 270 hardtop



Dart 270 4-door sedan



Dart 4-door sedan



Dart 2-door sedan  
lowest priced Dodge for '68

## America's first choice in compacts

What is it about Dart that has made it America's best-selling compact? Could be the extra room, luxury and comfort Dart offers. Could be Dart's nimble handling and gentle ride. On the other hand, maybe it's the way Dodge always manages to pack added excitement into Dart every year.

New styling touches, inside and out. Many thoughtful innovations everywhere. Even a new GTSport with a zesty 340-cu.-in. V8. Dart for 1968: Proof that you don't have to be rich to cure Dodge Fever!

Dart engines, transmissions, etc. . . . . page 15  
Dart options and accessories. . . . . page 17

### Dart Standard Equipment:

170 Six or 273 V8  
3-speed manual transmission (N.A. Dart GTS)  
heater/defroster  
choice of 16 standard exterior colors  
spare tire storage in tirewell beneath luggage compartment floor  
power top (convertibles)  
18-gallon fuel tank  
full wheel covers (GT)  
standard interiors:  
vinyl bucket seats (GT, GTS hardtops)  
vinyl bench seats (all others, except 270 sedan)  
cloth-vinyl bench seats (270 sedan)  
cigarette lighter\*  
3-spoke steering wheel, padded hub, partial horn ring\*  
full carpeting\*  
standard on GTS models only:  
340 (4-bbl.) V8, automatic transmission, Rallye Suspension,  
HD shocks, wide-tread tires  
body-side stripes (or "bumblebee" stripes)

\*These items are not included on Dart Series models.

### Specifications

#### Dimensions

Wheelbase. . . . 111"  
Track, front/rear. . . . 57.4" / 55.6"  
GTS track, f/r. . . 58.1" / 56.3"  
Overall length. . . 195.4"  
Overall width. . . 69.7"  
Overall height (V8 sedan). 53.9"

#### Brakes

Front/rear (6-cyl.) . . . 9" x 2 1/2" / 9" x 2"  
Front/rear (V8) . . . 10" x 2 1/4" / 10" x 1 3/4"  
Dual Braking System. Hydraulic, servo-contact, self-energizing, self-adjusting. Bonded linings. Parking brake is hand-operated, hand-released—mechanically actuating shoes on each rear wheel. Power brakes are optional on all Dart models. Front disc brakes (14" wheels and tires are included) are also optional on all Dart models.

#### Tires

6-cyl. models. . . 6.50 x 13 (170 Six only)  
V8 (except GTS) 7.00 x 13  
GTS models. . . E70 x 14 wide-tread  
14" wheels and tires are optional on all Dart models, except Dart GTS models on which they are standard. E70 x 14 wide-tread tires, mounted on 14 x 5.5J wide-rim wheels, require the addition of the optional Rallye Suspension (all items standard, GTS models).

#### Electrical System

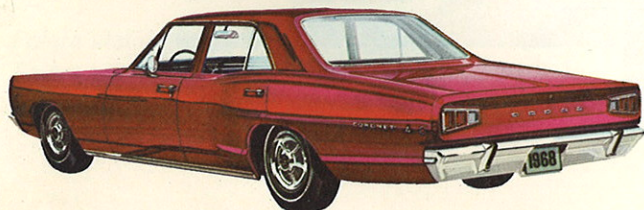
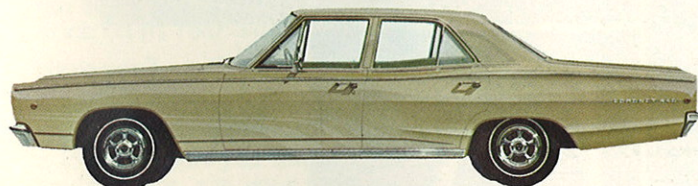
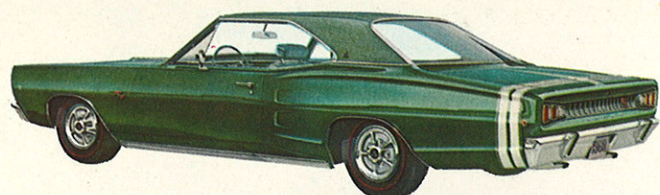
Battery: 12-volt, 6-cell, 38-amp-hr, standard on 6-cylinder models; 48-amp-hr, standard on V8s. 59-amp-hr optional on all Dart models. Alternator: 30-amp standard on 6-cylinder models; 37-amp standard on V8s (and Sixes with air conditioning). 46-amp alternator is optional with 6 or V8 and standard with air conditioning on V8 models.





**'68 DODGE CORONET**





## Coronet. If you think the looks are exciting, wait till you get inside.

Open the door of Coronet and slip behind the wheel. That's when Coronet will start to grow on you. Inside, where there's room to stretch out, room to move. Inside, where Coronet's doubly comfortable foam-padded seats,\* rich carpeting,† and all the thoughtful new touches add up to a wonderful new kind of automobile. And you can enjoy Coronet in so many different versions (that's one of the nicest things about this car). Whether you prefer all-vinyl seats or cloth-and-vinyl seats, Coronet has them for you. If you favor bench seats rather than buckets, get them in your Coronet. Or how about buckets up front with a center cushion and fold-down armrest? Coronet has them, too. But for all its comfort and thoughtfulness, Coronet's most appealing and irresistible feature is a simple piece of paper, its price tag. Very low for a whole lot of automobile, all of it new for 1968. One way or another, Dodge Fever is going to catch up with you, and it should be just about now. Be careful. Dodge Fever is very hard to resist.

\*Thick foam padding optional on Deluxe and 440.  
†Not available on Coronet Deluxe models.

### Coronet Standard Equipment

225 Six (Deluxe, 440 6-cyl. models)  
273 V8 (Deluxe 8-cyl. models)  
318 V8 (all Coronet 500, 440 V8 models)  
440-Magnum V8 (Coronet R/T)  
3-speed manual transmission (n.a., R/T)  
3-speed TorqueFlite automatic (R/T)  
standard seat trim  
Deluxe coupe and wagon, all-vinyl bench seats  
Deluxe sedan, cloth-vinyl bench seats  
440 HT and wagons, all-vinyl bench seats  
440 sedan, cloth-vinyl bench seats  
500 wagons, convertible, all-vinyl bench seats  
500 HT and sedan, all-vinyl bucket seats  
(cloth-vinyl bucket seats, black only, are alternate choice in 500 sedan only)  
R/T HT and convertible, all-vinyl bucket seats  
deep-pile carpeting (440, 500, R/T)  
color-keyed rubber floor mats (Deluxe)  
3-spoke steering wheel, w/padded hub, partial horn ring (440, 500, R/T)  
3-spoke steering wheel, with padded hub (Deluxe)  
heater/defroster  
cigarette lighter  
glove box lock  
power top (convertibles)  
foot-operated parking brake  
choice of 16 standard exterior colors  
rear seat foam cushion pad  
ashtray light  
20-gallon fuel tank (wagons, 19)

### From top to bottom:

Coronet R/T hardtop, Coronet R/T convertible,  
Coronet 500 hardtop, Coronet 500 convertible,  
Coronet 500 sedan, Coronet 440 hardtop,  
Coronet 440 sedan, Coronet Deluxe coupe,  
Coronet Deluxe sedan.

### Specifications

#### Dimensions

(These are 1968 Coronet 4-door-sedan dimensions. Other body styles may vary in some degree.)

Wheelbase.....117"  
Track, front/rear (6-cyl.).....59.5"/58.5"  
Track, front/rear (8-cyl.).....59.5"/59.2"  
Overall length.....206.6"  
Overall width.....76.7"  
Overall height.....54.7"

#### Brakes

Front/rear (6-cyl.).....10" x 2 1/2" / 10" x 1 3/4"  
Front/rear (V8).....10" x 2 1/2" / 10" x 2 1/2"  
Front/rear (R/T).....11" x 3" / 11" x 2 1/2"  
Hydraulic, servo-contact, self-energizing, with bonded linings. Dual Braking System. Parking brake is foot-pedal-operated, with hand-released lever—mechanically actuating shoes on each rear wheel. Master cylinder/parking brake warning light is standard on all models. In addition, power brakes are optional on all models, and front disc brakes are optional on all V8-powered Coronet models.

#### Tires

6-cyl. and V8.....7.35 x 14 (5.0 JK wheels)  
Coronet station wagons.....8.25 x 14 (5.5 JK)  
Coronet R/T.....F70-14 wide-tread (5.5 JK)  
Hemi V8 cars.....F70-15 wide-tread (6.0 JK)  
Other Coronet models can be equipped with F70-14 (black wall, white wall, or red wall wide-tread tires, at extra cost—n.a. 225 Six).

#### Electrical System

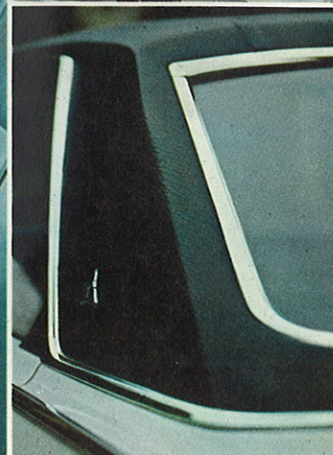
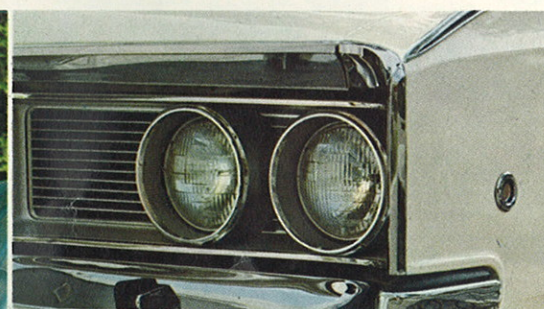
Battery: 12-volt, 6-cell, 48-amp-hr (225 Six, 273 V8, 318 V8). 59-amp-hr (383 V8s). 70-amp-hr (440-Magnum V8, Hemi V8). Alternator: 37-amp is standard on all Coronet models. (46-amp standard with air conditioning and optional on Coronet models not so equipped.)

Coronet station wagons.....page 13

Coronet engines, transmissions, etc....page 15

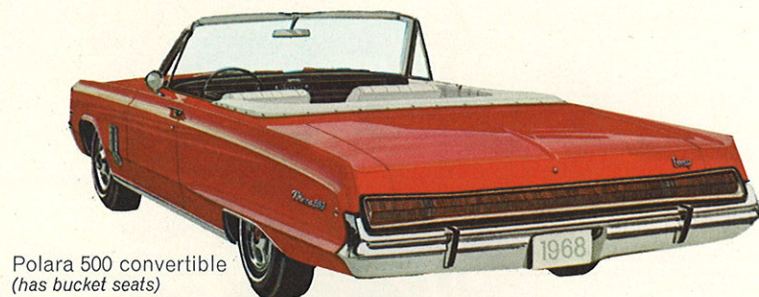
Coronet options and accessories.....page 17





**'68 DODGE POLARA**

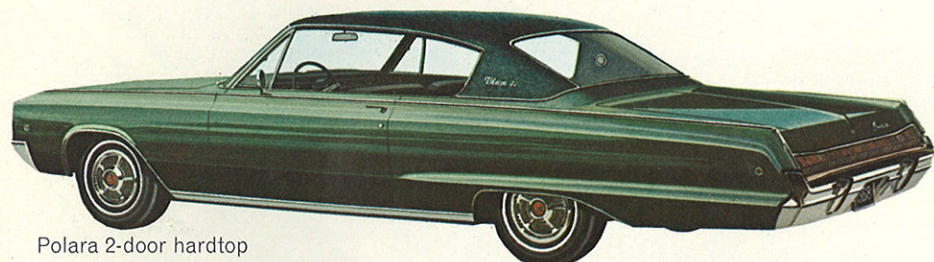




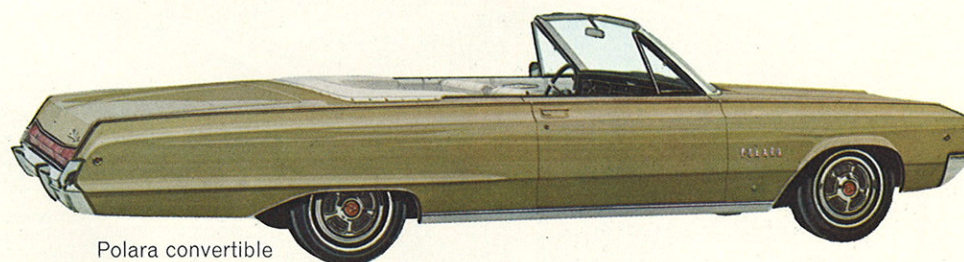
Polara 500 convertible  
(has bucket seats)



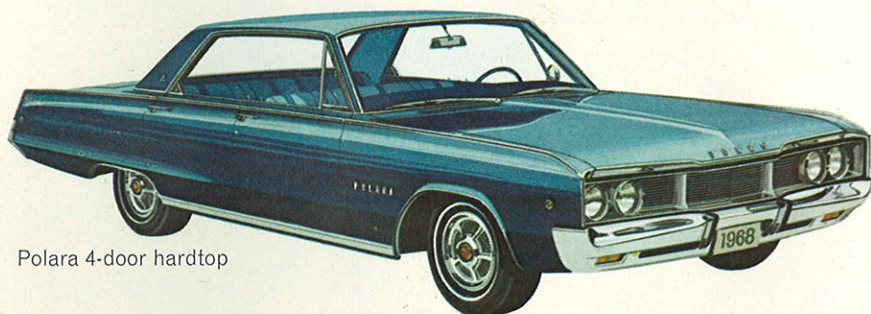
Polara 500 2-door hardtop  
(another bucket-seat beauty)



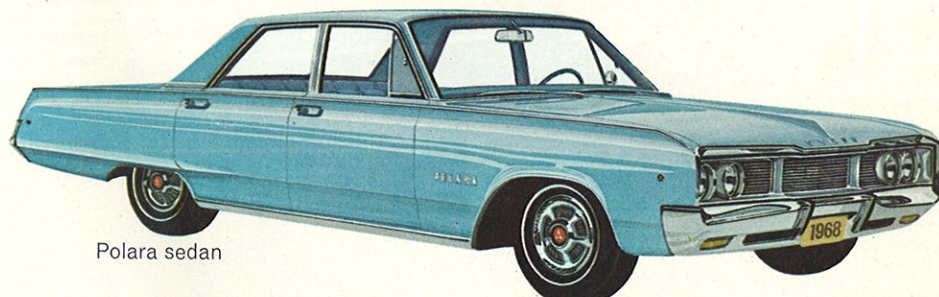
Polara 2-door hardtop



Polara convertible



Polara 4-door hardtop



Polara sedan

## Polara didn't enter the low-priced field—but you can leave it for a lot less than you'd guess.

They said it couldn't be done. That no one could build a car with all of Polara's luxury, size and comfort—and offer it at a price most car buyers could afford. But "they" obviously have not seen Polara close up or checked the low price on its rear window sticker.

Have you?

If not, do it now. You'll find that the price difference between Polara and lesser cars is a lot less than you might suspect. And while you're there, run your finger down the list of standard items on Polara—items that are extra-cost options on some of the other cars. Things like V8 power, sway bar, Safety-Rim wheels and more.

Dodge Fever is nice to have. But it's easier to cure—with a Polara all your own. Go ahead. Step up to Polara. It's easier than you think.

Polara station wagons . . . . . page 13  
Polara engines, transmissions, etc. . . . . page 15  
Polara options and accessories . . . . . page 17

### Polara Standard Equipment

318-cu.-in. V8 engine  
3-speed manual transmission  
cloth/vinyl interior trim in Polara hardtops and sedan  
all-vinyl interior trim in Polara convertible and station wagons  
front bucket seats, with center cushion/fold-down armrest,  
in Polara 500 models  
deep-pile carpeting  
2-spoke steering wheel with padded hub and partial horn ring  
heater/defroster  
cigarette lighter  
glove box door lock  
power top (Polara and Polara 500 convertibles)  
foot-operated parking brake  
sway bar  
choice of 16 standard exterior colors  
deluxe wheel covers (Polara 500 models)  
crank-operated vent panes  
rear seat foam cushion pad  
24-gallon fuel tank (wagons, 22)

### Specifications

#### Dimensions

(These are 1968 Polara 4-door-sedan dimensions. Other body styles may vary in some degree.)

Wheelbase . . . 122"  
Track, front/rear . . . 62.0"/60.7"  
Overall length . . . 219.0"  
Overall width . . . 80.0"  
Overall height . . . 56.3"

### Brakes

Hydraulic, servo-contact, self-energizing, self-adjusting. Bonded linings. Dual Braking System. Parking brake is foot-pedal-operated, with hand-released lever—mechanically actuating shoes on each rear wheel. Master cylinder/parking brake warning light is standard on all models. Polara station wagon brakes are 11 x 3 (front), 11 x 2½ (rear). All other Polara and Polara 500 models have 11 x 2¾ (front), 11 x 2 (rear). Heavy-duty, manually adjusted brakes (11 x 3, front and rear) are optional, all Polara models. Power brakes are also optional, as are front wheel disc brakes (front disc brakes include 15" wheels and tires).

### Tires

All Polara models (except wagons). 8.25 x 14 (5.5JK wheels). Polara station wagons . . . . . 8.55 x 14 (6.0JK wheels). 15" wheels and tires are optional on all Polara models and are included when car is equipped with front disc brakes. G70 x 15 wide-tread white sidewall or red wall tires are optional on all Polara models except station wagons.

### Electrical System

Battery: 12-volt, 6-cell, 48-amp-hr, standard on Polara and Polara 500 models equipped with 318 V8. 59-amp-hr, standard with 383-cu.-in. engines. 70-amp-hr, standard with 440-cu.-in. engines and optional with other engines. Alternator: 37-amp, standard. (46-amp standard with air conditioning and optional on Polara models not so equipped.)



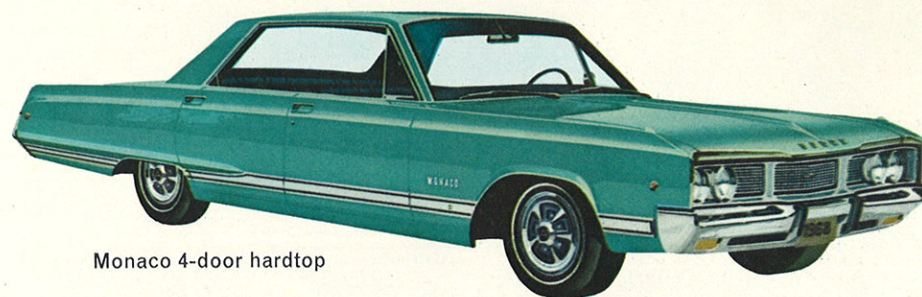


**'68 DODGE MONACO**

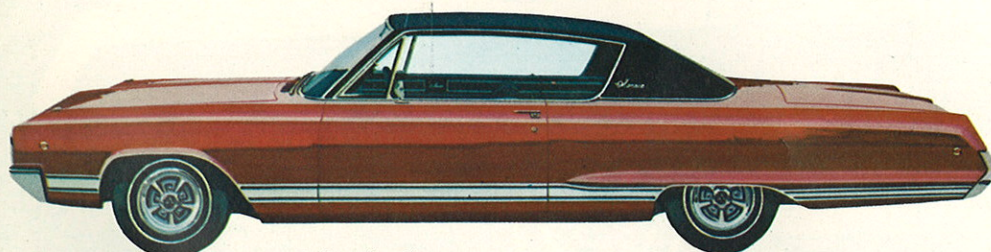




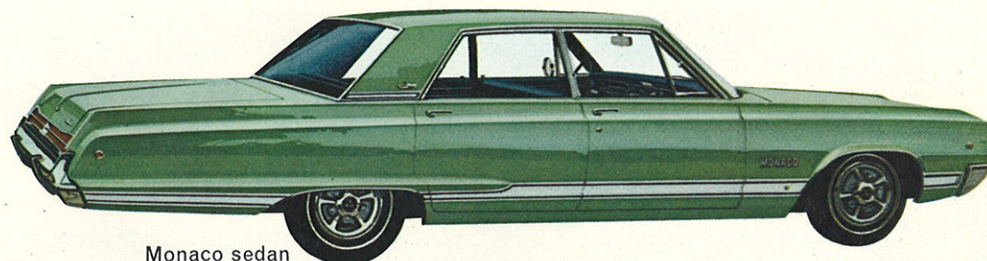
Monaco 500 2-door hardtop



Monaco 4-door hardtop



Monaco 2-door hardtop



Monaco sedan

## What kind of people are Monaco people?

The new Dodge Monaco is an automobile conceived and built for the person who knows the difference between a red table wine and a "1961 Chateau Lafite-Rothschild."

A "Monaco person" would agree with Oscar Wilde, who said, "I have very simple tastes. I am always satisfied with the best."

Such a person demands driving comfort. He will find it in Monaco. In seats that carry him a respectful distance from the floor. Deeply pleated, foam-padded, finished in muted tones of Ascot- and Cologne-grained vinyls or knitted nylon cloth.

He will find it in the careful attention to sound reduction achieved through meticulous placement of special sound-absorbent materials on the floors, roof and fire wall.

He will find it in the absolute solidity underway. A studied indifference to cross winds, uneven road surfaces and other minor annoyances.

If this sounds like your kind of automobile—you may be getting Dodge Fever.

*Monaco station wagons.....page 13*

*Monaco engines, transmissions, etc.....page 15*

*Monaco options and accessories.....page 17*

## Monaco Standard Equipment

383-cu.-in. (2-bbl.) V8 engine  
3-speed manual transmission  
3-speed automatic transmission (Monaco 500 only)  
cloth-vinyl interior trim in Monaco 4-dr. HT and sedan  
all-vinyl interior trim in Monaco 2-dr. and 4-dr. HT and wagons  
front bucket seats, with center cushion/fold-down armrest in Monaco 500  
deep-pile carpeting  
2-spoke steering wheel with padded hub and partial horn ring  
heater/defroster  
cigarette lighter  
glove box lock  
Light Package  
electric clock (Monaco 500)  
power tailgate window (Monaco wagons)  
foot-operated parking brake  
sway bar  
choice of 16 standard exterior colors  
deluxe wheel covers  
crank-operated vent panes  
front and rear foam seat cushion pads  
24-gallon fuel tank (wagons, 22)  
cornering lights (Monaco 500)

## Specifications

### Dimensions

(These are 1968 Monaco 4-door-sedan dimensions.

Other body styles may vary in some degree.)

Wheelbase...122"

Track, front/rear...62.0"/60.7"

Overall length...219.0"

Overall width...80.0"

Overall height...56.3"

## Brakes

Hydraulic, servo-contact, self-energizing, self-adjusting. Bonded linings. Dual Braking System. Parking brake is foot-pedal-operated, with hand-released lever, mechanically actuating shoes on each rear wheel. Master cylinder/parking brake warning light is standard on all models. Monaco station wagon brakes are 11 x 3 (front), 11 x 2½ (rear). All other Monaco and Monaco 500 models have 11 x 2¾ (front), 11 x 2 (rear). Heavy-duty, manually adjusted brakes (11 x 3, front and rear) are optional, all Monaco models. Power brakes are also optional, as are front wheel disc brakes (front disc brakes include optional 15" wheels and tires).

## Tires

All Monaco models

(except wagons).....8.25 x 14 (5.5JK wheels).

Monaco station wagons.....8.55 x 14 (6.0JK wheels).

15" wheels and tires are optional on all Monaco models and are included when car is equipped with front disc brakes. G70 x 15 red wall wide-tread or white sidewall tires are optional on all Monaco models except station wagons.

## Electrical System

Battery: 12-volt, 6-cell, 59-amp-hr, standard with 383-cu.-in. engines. 70-amp-hr, standard with 440-cu.-in. engines and optional with other engines. Alternator: 37-amp, standard. (46-amp standard with air conditioning and optional on Monaco models not so equipped.)







# DODGE STATION WAGONS

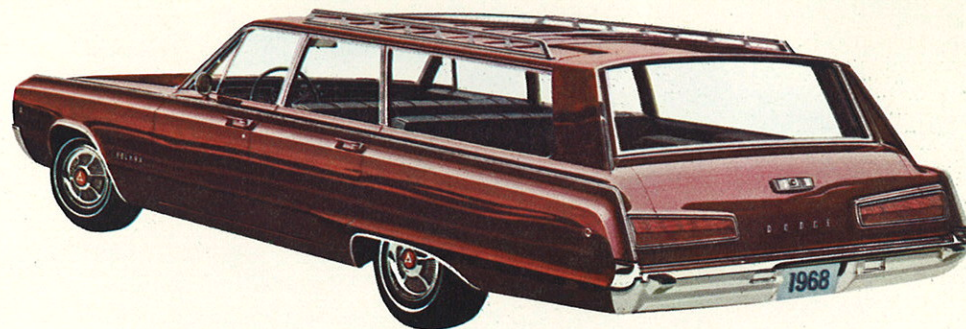


Monaco Station Wagon, 2-seat and 3-seat models. 383 (2-bbl.) V8, std.

## MONACO WAGONS

are the most luxurious and lavish wagons in the lineup. Big 383-cu.-in. V8 (2-bbl.) comes standard and gives you the pleasant little bonus of running on regular gasoline. Of course, you can get more powerful V8s, if you want them—the 383 (4-bbl.) and the 440 (4-bbl.) with dual exhausts.

The extensive list of wagon options (page 17) allows you to individualize your Monaco wagon to fit your mode of travel—although a great number of things are included as standard. And one of the sportiest touches in wagons—optional front bucket seats with center cushion and fold-down armrest—can be yours at extra cost in Monaco wagons.



Polara Station Wagon, 2-seat and 3-seat models. 318 (2-bbl.) V8, std.

## POLARA WAGONS

offer you a lot of room, a lot of luxury, an extremely wide range of custom options and accessories—plus the operating economy of the 318-cu.-in. V8 that is standard equipment. The Dodge Engine Chart (page 15) points up the three optional V8s you can choose, at extra cost, for your Polara wagon.

Adjustable roof luggage rack, single or dual air conditioning (with or without Automatic Temperature Control), a power tailgate window that mysteriously washes itself clean, a locking cargo compartment (or third seat well), and a choice of two-tone exterior colors are but a few of Polara wagon options you can specify as extra-cost items.

## CORONET WAGONS

for '68 are brand-new from hood to double-acting tailgate (standard on every model). Opens as a door—drops down as a tailgate—with hinges concealed for safety and a neat appearance. There are also two new Coronet wagon models this year—top-of-the-line Coronet 500's with simulated wood-grained trim, with optional front bucket seats—with or without center cushion/fold-down armrest—and a lot more.

Remember how *dusty* tailgate windows can get? Coronet wagons have solved the problem with an optional tailgate window washer/wiper. (Just press a button on the dash, and a dirty tailgate window disappears mysteriously to re-emerge washed and dried!) You can order this option on any Coronet station wagon all across the line. What else is new? Stereo-tape player (with 3 instrument-panel-mounted

speakers for "orchestra shell" fidelity), a new Auto Pilot Automatic Speed Control plus dozens of other options (listed on page 17). With such great new looks—such thoughtful luxury and comfort—with such an exceptional choice of engines and options and accessories—at your kind of price . . . you might easily find yourself getting *Dodge Wagon Fever*.

New double-acting tailgate is standard equipment on every Dodge Coronet wagon for 1968.

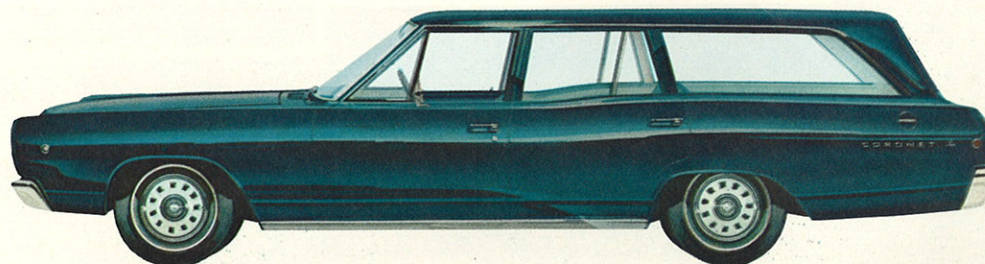


Coronet 440 Station Wagon, 2-seat models—6 or V8 power. 3-seat models—V8 power only.

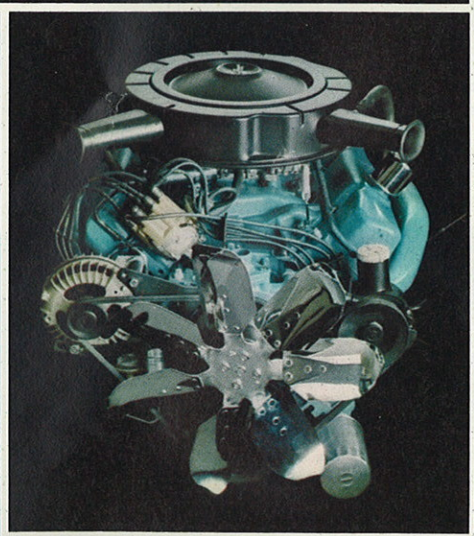
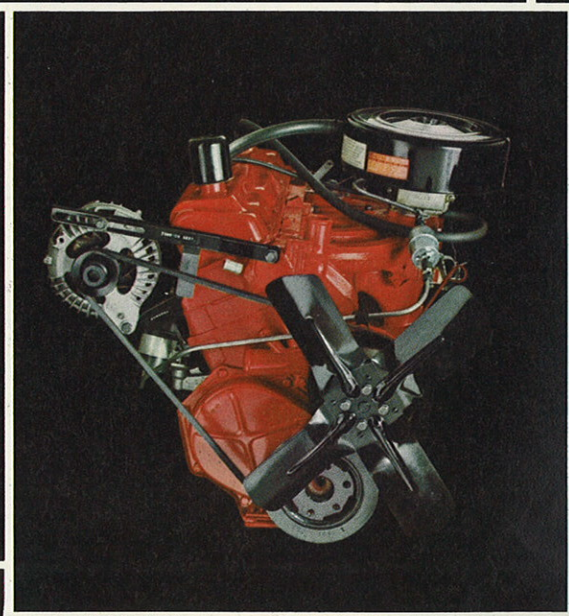
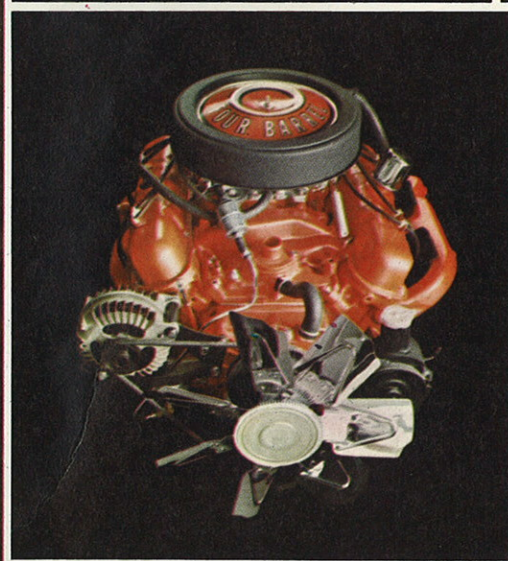
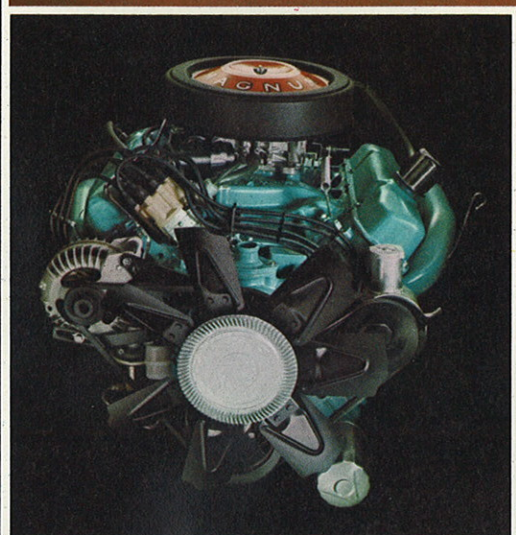
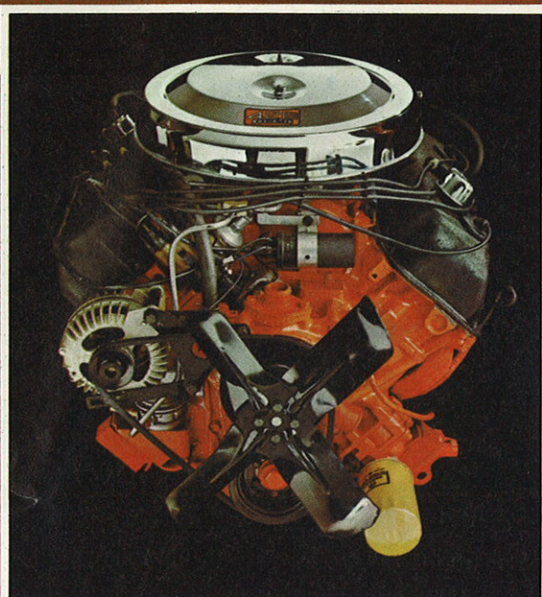
Coronet 500 Station Wagon, 2-seat and 3-seat models. 318 (2-bbl.) V8, std.



Coronet Deluxe Station Wagon, 2-seat model only—6 or V8 power. Lowest priced Dodge wagon for '68.









## DODGE ENGINES, TRANSMISSIONS, SUSPENSIONS.

### DART ENGINES:

The 170-cu.-in. Six is standard in Dart 6-cylinder models—the 225-cu.-in. Six is optional.\* The 273-cu.-in. (2-bbl.) V8 is standard in Dart 8-cylinder models—the 318-cu.-in. (2-bbl.) V8 is optional.\*

In addition, for Dart GTSport models only, a new high-compression, high-performance 340-cu.-in. (4-bbl.) V8 is standard—a special 383-cu.-in. (4-bbl.) V8 is optional.\* (The 273 V8 and 318 V8 are not available on GTS models.)

### DART TRANSMISSIONS:

Three basic transmissions are offered:

(1) The 3-speed manual, with column-mounted shift. It is standard with the 170 Six, 225 Six, and 273 V8 only, and not available on Dart GTS models.

(2) The 4-speed manual has a floor-mounted shift (or console-mounted in Dart models equipped with optional\* center console). The 4-speed, fully synchronized manual is optional\* with Dart 273 V8 and 318 V8, optional on GTS at no extra cost, not available in 6-cylinder models.

(3) The 3-speed TorqueFlite automatic has a column-mounted selector (console-mounted in Dart models equipped with optional\* center console). It is water-cooled, has an aluminum housing, and an internally actuated parking sprag. A "partial kickdown" (2nd gear) feature gives improved acceleration for 6-cylinder Dart models. TorqueFlite automatic is standard on GTS models.

### DART SUSPENSION:

All Dart models have torsion bars and ball joints in front, asymmetrical leaf springs in the rear, Oriflow shocks at each wheel. Entire suspension is rubber-isolated. Dart Rallye Suspension and HD shocks are standard on GTS models, optional on other Darts.

### CORONET ENGINES:

The 225-cu.-in. Six is standard in Coronet 6-cylinder models. This engine is not available in 3-seat wagons, any Coronet 500 or R/T models.

The 273-cu.-in. (2-bbl.) V8 is standard in

Coronet Deluxe 8-cylinder models. The 273 V8 is not available in Coronet 440, 500 or R/T models.

The 318-cu.-in. (2-bbl.) V8 is standard in Coronet 440 and 500 V8 models, optional\* in Coronet Deluxe models, not available on R/T.

The 383-cu.-in. (2-bbl. and 4-bbl.) V8s are optional\* in all Coronet V8 models except Coronet R/T.

The 440-cu.-in. (4-bbl.) Magnum V8 is standard in Coronet R/T models, not available in other Coronet models. The Dodge 426-cu.-in. (two 4-bbl.) Hemi V8 is optional\* in R/T models.

### CORONET TRANSMISSIONS:

Three basic transmissions are offered:

(1) The 3-speed manual, with column-mounted shift. It is standard with the 225 Six, 273 V8 and 318 V8 only, not available on Coronets powered by other V8 engines.

(2) The 4-speed manual has a floor-mounted shift (or console-mounted in Coronet models equipped with optional\* center console). The 4-speed, fully synchronized manual is optional\* with the 383 V8s, no extra-cost with 440-Magnum V8 and 426 Hemi V8 only.

(3) The 3-speed TorqueFlite automatic has a column-mounted selector (console-mounted in Coronet models equipped with optional\* center console). It is water-cooled, has an aluminum housing and an internally actuated parking sprag. TorqueFlite automatic is standard on R/T, optional\* on all other Coronet models.

### CORONET SUSPENSION:

The standard Coronet suspension features torsion bars and ball joints in front, asymmetrical leaf springs in the rear, Oriflow shocks at each wheel—suspension is rubber-isolated. HD Suspension Package (HD torsion bars, HD rear springs, sway bar) as well as HD shocks are optional\* for all Coronets, except R/T. Coronet R/T has a special Handling Package, standard. This suspension is not available on other Coronet models.

### CHARGER ENGINES:

Charger comes standard with the 318-cu.-in. V8. The 383-cu.-in. (2-bbl.) V8, which uses regular fuel, and the 383-cu.-in. (4-bbl.) V8

are optional\* on Charger, not available on Charger R/T.

Charger R/T comes standard with the 440-cu.-in. Magnum V8. The 426-cu.-in. (two 4-bbl.) Hemi V8 is optional\* on Charger R/T only.

### CHARGER TRANSMISSIONS:

The 3-speed manual ("3-on-the-tree") is standard with the 318 V8 only; not available with other Charger V8s.

TorqueFlite 3-speed automatic with column-mounted selector (console-mounted on Charger models equipped with optional\* center console) is standard on Charger R/T, and optional\* on regular Charger models.

Full-sync 4-on-the-floor manual (console-mounted on Charger models equipped with optional\* center console) is optional\* with most Charger V8s, not available with 318 V8. Optional on Charger R/T.

### CHARGER SUSPENSION:

Standard on Charger is the HD Suspension Package which includes HD rear springs and sway bar. HD shocks, not included in the Package, are optional\* on Charger.

Standard on Charger R/T is the special Handling Package which includes HD torsion bars, HD shocks, sway bar and XHD rear springs. This Package is not available on regular Charger.

### POLARA and MONACO ENGINES:

The standard engine for all Polara and Monaco 500 models is the 318-cu.-in. (2-bbl.) V8. The 383-cu.-in. (2-bbl., regular fuel), the 383-cu.-in. (4-bbl.) and the 440-cu.-in. Magnum V8 are optional\* on most Polara and Monaco 500 models. Polara station wagons offer a special 440-cu.-in. (4-bbl.) V8 optional\* instead of the 440-Magnum V8.

The standard engine for all Monaco models and Monaco 500 is the 383-cu.-in. (2-bbl., regular fuel). The 383-cu.-in. (4-bbl.) V8 and 440-cu.-in. Magnum V8 are optional\* for most Monaco models and Monaco 500. Monaco station wagons offer a special 440-cu.-in. (4-bbl.) V8 optional\* instead of the 440-Magnum V8.

### POLARA and MONACO TRANSMISSIONS:

The 3-speed manual, with column-mounted shift, is standard on all Polara, Polara 500 and Monaco models when powered either by 318 V8 or 383 (2-bbl.) V8. (Monaco 500 comes equipped with automatic transmission, standard.) 3-speed manual is not available with other V8 engines or on Monaco 500.

The 3-speed TorqueFlite automatic transmission has a column-mounted selector (console-mounted in Polara 500 and Monaco 500 models equipped with optional center console). It is water-cooled, has an aluminum housing and an internally actuated parking sprag. TorqueFlite automatic comes standard on Monaco 500 and is optional\* with all V8 engines on Polara, Polara 500 and Monaco models.

Two 4-speed manual transmissions are available on Polara 500 models and Monaco 500 when these cars are powered by either the 383 (4-bbl.) V8 or 440-Magnum V8 and also equipped with optional center console. 4-speed manual transmissions are not available on other Polara or Monaco models, nor with other V8 engines. A special HD 4-on-the-floor\* comes with the 440-Magnum V8.

### POLARA and MONACO SUSPENSION:

The standard Polara and Monaco suspension features torsion bars and ball joints plus a sway bar in front, asymmetrical leaf springs in the rear, Oriflow shocks at each wheel—suspension components are rubber-isolated. HD Suspension Package\* for Polara and Monaco includes HD torsion bars, HD rear springs, HD sway bar. In addition, HD shocks\* are available as a separate option in all models.

### REAR AXLE RATIOS

A number of rear axle ratios are offered with each Dodge engine and transmission team. Standard ratios have been carefully chosen to provide a balance of performance and economy. However, for more specialized applications, your Dodge Dealer can order your 1968 Dodge Dart, Coronet, Charger, Polara or Monaco delivered with a more suitable ratio.

\*Optional, at extra cost.

## 1968 DODGE ENGINES

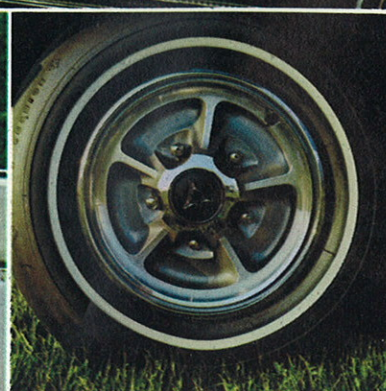
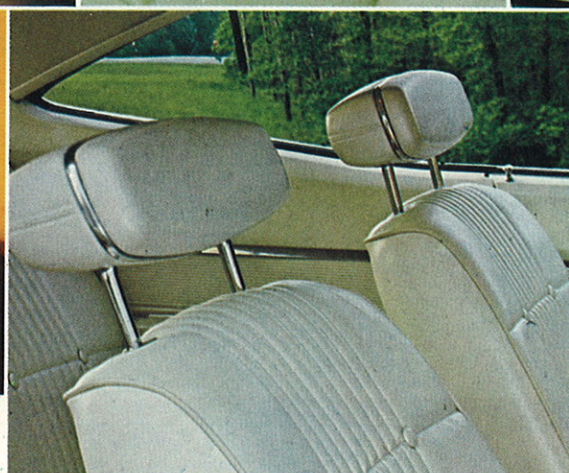
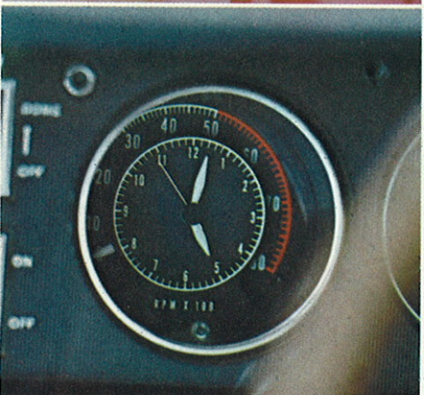
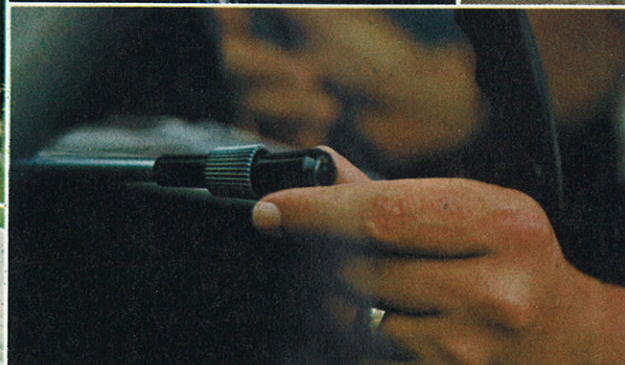
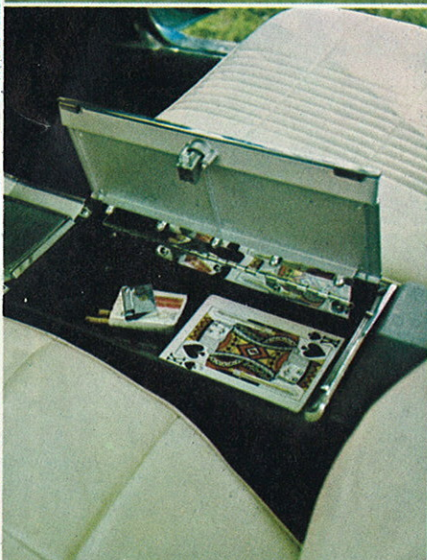
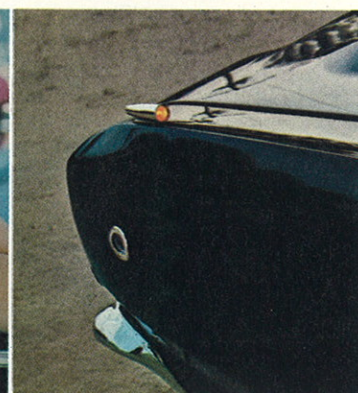
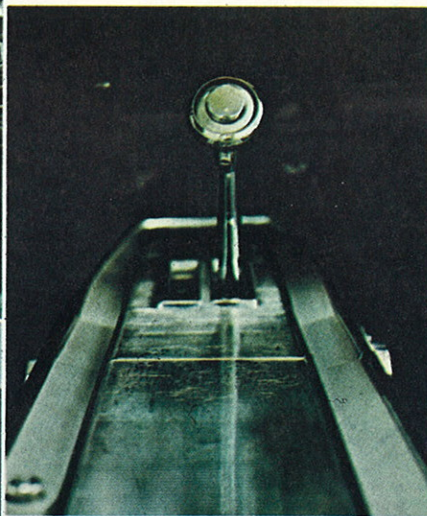
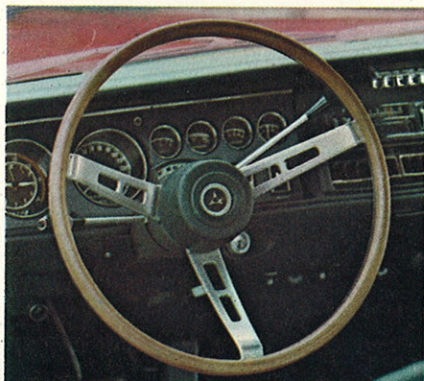
Model availability	Dart only	Dart, Coronet	Dart, Coronet Deluxe	Dart, Coronet, Charger, Polara	Dart GTS only	Dart GTS only	Coronet, Charger, Polara, Monaco	Coronet, Charger, Polara, Monaco	Polara, Monaco Station Wagons only	Coronet R/T, Charger R/T, Polara, Monaco	Coronet R/T, Charger R/T
displacement/cylinders	170-cu.-in. Six	225-cu.-in. Six	273-cu.-in. V8	318-cu.-in. V8	340-cu.-in. V8	383-cu.-in. V8	383-cu.-in. V8	383-cu.-in. V8	440-cu.-in. V8	440-cu.-in. V8 Magnum	426-cu.-in. V8 Hemi
bore x stroke (in.)	3.4 x 3.125	3.4 x 4.125	3.63 x 3.31	3.91 x 3.31	4.04 x 3.31	4.25 x 3.38	4.25 x 3.38	4.25 x 3.38	4.32 x 3.75	4.32 x 3.75	4.25 x 3.75
tappets	mechanical	mechanical	hydraulic	hydraulic	hydraulic	hydraulic	hydraulic	hydraulic	hydraulic	hydraulic	mechanical
carburetor	1-bbl.	1-bbl.	2-bbl.	2-bbl.	4-bbl.	4-bbl.	2-bbl.	4-bbl.	4-bbl.	4-bbl.	two 4-bbl.
compression ratio	8.5:1	8.4:1	9.0:1	9.2:1	10.5:1	10.0:1	9.2:1	10.0:1	10.1:1	10.1:1	10.25:1
air cleaner	silenced	silenced	silenced	silenced	unsilenced	unsilenced	silenced	unsilenced	double snorkel	*	unsilenced
exhaust system	single	single	single	single	dual	dual	single	dual	dual	dual	dual
crankcase capacity	4 quarts—5 quarts when replacing oil filter (Hemi V8: 5 qts.—6 qts. when replacing filter)										
coolant capacity	12 qts.	13 qts.	19 qts.	18 qts.	18 qts.	17 qts.	17 qts.	17 qts.	17 qts.	18 qts.	18 qts.
horsepower @ rpm	115 @ 4400	145 @ 4000	190 @ 4400	230 @ 4400	275 @ 5000	300 @ 4400	290 @ 4400	330 @ 5000	350 @ 4400	375 @ 4600	425 @ 5000
torque (lbs.-ft.) @ rpm	155 @ 2400	215 @ 2400	260 @ 2000	340 @ 2400	340 @ 3200	400 @ 2400	390 @ 2800	425 @ 3200	480 @ 2800	480 @ 3200	490 @ 4000
fuel recommended	regular	regular	regular	regular	premium	premium	regular	premium	premium	premium	premium

\*Unsilenced air cleaner on Coronet R/T and Charger R/T w/automatic or 4-sp.; Polara 500 and Monaco 500 w/4-sp. Double-snorkel air cleaner on Polara, Polara 500, Monaco, Monaco 500 w/automatic transmission.



## '68 DODGE OPTIONS

Listed here are many  
of the most popular  
options and accessories.





## DART OPTIONS

Air conditioning (n.a. w/170 Six or 383 V8)  
 Brakes, front disc  
 Bucket seats for convertibles (std., GT, GTS hardtops)  
 Bumper guards, front and rear  
 Console (w/buckets, automatic or 4-spd.)  
 Defogger, rear window (except conv.)  
 Differential, Sure Grip  
 Engines (see page 15)  
 Fender-mounted turn signal indicators  
 Glass, tinted—all windows or windshield  
 Head restraints, custom, color-keyed vinyl  
 Hood insulation, with Undercoating  
 Light Package  
 Mirror, outside, left (remote-control)  
 Power brakes, Power steering  
 Radio  
 Seat belts (center), front and/or rear  
 Shoulder belts (left & right), front/rear  
 Shock absorbers, HD (std., GTS)  
 Suspension, Rallye (std., GTS)  
 16:1 fast manual steering (24:1 std.)  
 Tachometer (on console, V8s only)  
 Tires, wide-tread, E70-14 (std., GTS)  
 Trailer-Towing Package (details below)  
 Transmissions (see page 15)  
 Vinyl bench seats (for 270 sedan)  
 Vinyl roof (270 sedan, all hardtops)  
 Wheel covers (std., GT models)  
 Windshield wiper, variable-speed, electric (2-speed electric is standard)

## CORONET OPTIONS

Air conditioning (n.a. Hemi)  
 Auto Pilot Speed Control (n.a. Hemi)  
 Brakes, front disc (V8s only)  
 Brakes, drum, HD (std., R/T)  
 Bucket seats (opt., Coronet 500 convertible and wagons)  
 (std., Coronet 500 HT, sedan; R/T models)  
 Bumper guards, front and rear  
 Clock  
 Center cushion, fold-down armrest (with bucket seats; std., Coronet 500 sedan)  
 Console (Coronet 500, R/T, HT and convertibles only)  
 Defogger, rear window (n.a. wagons, convertibles)  
 Differential, Sure Grip  
 Engines (see page 15)  
 Fender-mounted turn signal indicators  
 Glass, tinted—all windows or windshield  
 Head restraints, custom, color-keyed vinyl  
 Hood insulation, with Undercoating  
 Light Package  
 Mirror, outside, left (remote-control)  
 Power brakes, Power steering  
 Power windows (440, 500, R/T 2-door only)  
 Radio: AM, AM deluxe, or AM w/stereo-tape player

Rear seat speaker (n.a. convertibles, wagons)  
 Road wheels, chromed  
 Seat belts (center), front and/or rear  
 Shoulder belts (left & right), front/rear  
 Station wagon items:  
 Power tailgate window (std., 3-seat wagons)  
 Tailgate window washer/wiper  
 Roof luggage rack  
 Shock absorbers, HD (std., R/T)  
 Suspension, HD (all, except R/T models)  
 Tachometer, on instrument panel (V8s only)  
 Tires, wide-tread, F70-14 (std., R/T)  
 Trailer-Towing Package (details below)  
 Transmissions (see page 15)  
 Vinyl bench seats (for Deluxe, 440 sedans)  
 Vinyl roof (n.a. convertibles, wagons or Coronet Deluxe 4-door sedan)  
 Wheel covers (several types)  
 Windshield wiper, 3-speed, electric (2-speed electric is standard)

## CHARGER OPTIONS

Air conditioning (n.a. Hemi V8)  
 Auto Pilot Speed Control (n.a. Hemi V8)  
 Brakes, front disc  
 Brakes, drum, HD (std., Charger R/T)  
 Clock/tach (clock, alone, is standard)  
 Center cushion, fold-down armrest (front)  
 Console  
 Defogger, rear window  
 Differential, Sure Grip  
 Engines (see page 15)  
 Glass, tinted—all windows or windshield  
 Head restraints, custom, color-keyed vinyl  
 Hood insulation, with Undercoating  
 Hood-mounted turn signal indicators  
 Light Package  
 Mirror, outside, left (remote-control)  
 Power brakes  
 Power steering  
 Power windows  
 Radio: AM, AM deluxe, or AM w/stereo-tape player; rear seat speaker  
 Road wheels, chromed  
 Seat belts (center), front and/or rear  
 Shoulder belts (left & right), front/rear  
 Shock absorbers, HD (std., Charger R/T)  
 Tires, wide-tread, F70-14 (std., R/T)  
 Trailer-Towing Package (details below)  
 Transmissions (see page 15)  
 Vinyl roof covering  
 Wheel covers (several types)  
 Windshield wiper, 3-speed, electric (2-speed electric is standard)

## POLARA and MONACO OPTIONS

Air conditioning or A.C. w/automatic temp. control  
 Dual air conditioning or dual A.C. with automatic temp. control (wagons only)

Auto Pilot Speed Control  
 Brakes, front disc; brakes, drum, HD  
 Bucket seats (std., Polara 500, Monaco 500) (opt., Monaco 4-dr. HT, Monaco wagons)  
 Bucket seat, passenger reclining (Monaco 500)  
 Bumper guards, front and rear  
 Center cushion, fold-down armrest (included with bucket seats, all)  
 Clock (standard in Monaco 500)  
 Console (Polara 500, Monaco 500 only)  
 Deck release, vacuum (except wagons)  
 Defogger, rear window (except wagons, convertibles)  
 Differential, Sure Grip  
 Door locks, electric  
 Engines (see page 15)  
 Fender-mounted turn signal indicators  
 Glass, tinted—all windows or windshield  
 Head restraints, custom, color-keyed vinyl  
 Hood insulation, with Undercoating  
 Light Package (standard on Monaco, Monaco 500)  
 Mirror, outside, left (remote-control)  
 Power brakes, Power steering

Power front seat (6-way positioning)  
 Power windows  
 Radio: AM, AM deluxe, AM-FM, AM w/stereo-tape player  
 Rear seat speaker (n.a. wagons)  
 Road wheels, chromed  
 Seat belts (center), front and/or rear  
 Shoulder belts (left & right), front/rear  
 Station wagon items:  
 Lockable luggage comp. (std., Monaco 3-seat)  
 Power tailgate window (std., all 3-seat and Monaco 2-seat wagons)  
 Roof luggage rack (adjustable)  
 Steering wheel, tilt and telescope  
 Shock absorbers, HD; Suspension, HD  
 Tachometer (Polara 500, Monaco 500 only)  
 Tires, wide-tread, G70-15  
 Trailer-Towing Package (details below)  
 Transmissions (see page 15)  
 Vinyl bench seats (Polara hardtops, sedan)  
 Vinyl roof (n.a. convertibles, wagons)  
 Wheel covers (several types)  
 Windshield wiper, 3-speed, electric (2-speed electric is standard)

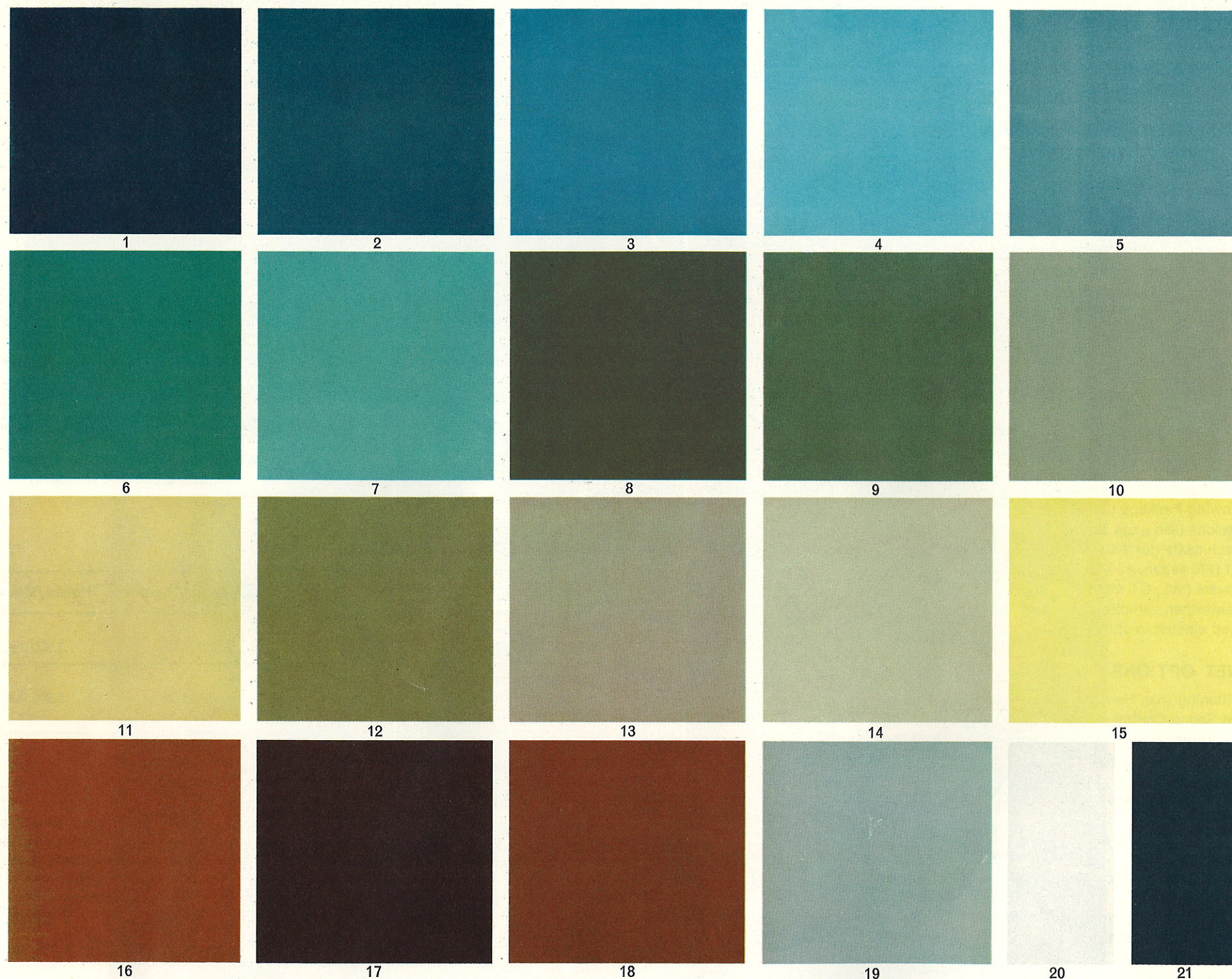
## TRAILER-TOWING PACKAGE

	Dart	Coronet/Charger	Polara/Monaco
Towing Pkg. required, if gross trailer weight exceeds	1,500 lbs.	2,000 lbs.	2,500 lbs.
Maximum gross trailer weight with Towing Pkg. installed	2,000 lbs.	4,000 lbs.	5,500 lbs.
Loaded trailer tongue-weight requiring load-equalizing frame-type hitch*	150 lbs.	200 lbs.	250 lbs.
<b>Basic Towing Package</b> ■ high-capacity radiator ■ HD suspension—front, rear ■ 7-blade cooling fan ■ sway bar ■ fan shroud, hood seal ■ HD turn signal flasher ■ HD rear axle—3.23 ratio ■ HD stoplight switch ■ larger transmission-oil cooler (Charger/Coronet only)			
HD brakes	10" diameter (std., V8)	11" diameter (std., R/T models)	11" diameter
Wide-rim wheels	5.5 JK	5.5 JK	6.0 JK
Extra-cost equipment also required for trailer towing	TorqueFlite automatic transmission (all models)		
Optional tires	D70-14, wide-tread	7.75x14 8.55x14 (wagons) F70-14 (w/440 V8)	8.55x14 8.55x14-8PR (wagons)
Recommended additional optional equipment for trailer towing	■ power steering ■ air conditioning (V8 required in Dart) ■ power brakes ■ high-output alternator (46-amp) ■ front disc brakes ■ HD battery (70-amp-hr) ■ Sure Grip rear axle ■ larger V8 (273 V8 in Dart) ■ Auto Pilot Speed Control (all, except Dart)		
Engine restrictions	available with 225 Six, 273 V8 only; n.a. GTSport	available with 318 V8, 383 V8s, 440 V8; n.a. Hemi V8, 225 Six	available with all V8 engines except 318 V8

\*Hitch not supplied by Dodge.



# '68 DODGE COLORS



1—Dark Blue Metallic (all) 2—Medium Blue Metallic (P/M only) 3—Bright Blue Metallic (Dt/Co/Ch) 4—Light Blue Metallic (Dt/Co/Ch) 5—Pale Blue Metallic (P/M only) 6—Medium Turquoise Metallic (all) 7—Light Turquoise Metallic (P/M only) 8—Racing Green Metallic (all) 9—Medium Green Metallic (all) 10—Light Green Metallic (all) 11—Light Gold (P/M only) 12—Medium Gold Metallic (all) 13—Medium Tan Metallic (all) 14—Beige (all) 15—Yellow (Dt/Co/Ch) 16—Bronze Metallic (Dt/Co/Ch) 17—Burgundy Metallic (all) 18—Red (all) 19—Silver Metallic (extra cost, all) 20—White (all) 21—Black (all)

(all)—All '68 Dodge models (P/M only)—Polara and Monaco only (Dt/Co/Ch)—Dart, Coronet, Charger

In addition to these solid exterior colors, a wide selection of two-tone color combinations is offered (extra cost) on all models, with the exception of convertibles, Charger, and station wagons that have simulated wood-grained trim (Monaco and Coronet 500 wagons).

Certain models of sedans, coupes and hardtops (in all Dodge car lines) can be equipped with vinyl roof-covering (extra cost) in a choice of black, antiqued white or antiqued green.

The colors reproduced here are as accurate as modern high-speed printing equipment is able to depict them. Ask your Dealer to show you actual '68 Dodge exterior enamel colors.





Dodge Sportsman (90" wheelbase)



Dodge Custom Sportsman  
(108" wheelbase)

## DODGE SPORTSMAN WAGONS

**Now you have two sizes—  
4 models—  
to choose from!**

In addition to the 90"-wheelbase Sportsman wagon, there's a new longer version. It has 18 added inches of floor length, over 39 extra cubic feet of room (252 cu. ft. in all). Both sizes available as Sportsman or Custom Sportsman. Both sizes offer you the same engine and transmission choice (170 and 225 Sixes, 318 V8—3-speed manual or 3-speed automatic transmission). Both sizes offer you a wide choice of individual comfort and appearance options, too. Things like: extra heater for rear compartment, HD suspension to boost load capacity to 1 ton, tinted windows, radio, antispin differential, to name just a few.

Custom Sportsman wagons have a rich golden tan/charcoal brown vinyl interior. Regular Sportsman wagons have new color-keyed interiors in black, tan, blue or green.

There's a lot more that's new about Dodge Sportsman wagons for '68. Get all the details in a special Sportsman Wagon Catalog that your Dealer will be glad to give you.



## STANDARD SAFETY FEATURES

To further enhance the convenience and comfort of the car and to provide greater motoring safety for the driver and passengers, 1968 Dodge models include the features listed below as standard equipment.

Dual Braking System  
Turn signals  
Padded instrument panel  
(upper and lower pads)  
Master cylinder/parking brake warning light  
Windshield washers  
Safety-Action inside door handles  
Left, outside, rearview mirror  
Retractable, front seat belts\*  
Break-away ashtray on instrument panel†  
Side marker lights  
Soft knobs on window cranks  
Cleaner Air System  
Energy-absorbing steering column and wheel  
Backup lights  
Padded sun visors  
Windshield wipers, 2-speed, electric; parallel  
action blades with glare-resistant finish  
Hazard Warning System  
Safety-Rim wheels  
Prismatic, day/night, inside rearview mirror  
with double-ball-joint safety mount  
Rear seat belts  
(including 3rd seat on 3-seat wagons)  
Manual latch on front seatbacks (2-door  
models and 4-doors with bucket seats only)  
Padded front seatback  
Nonoverride door locks

\*N.A. Coronet 2-door bench seat models.

†N.A. Coronet, Charger.

*All product illustrations and specifications are based on authorized information. Although all descriptions are believed correct at publication approval, accuracy cannot be guaranteed. Some of the equipment shown on product illustrations is optional, at extra cost. Dodge Division reserves the right to make changes from time to time, without notice or obligation, in prices, specifications, colors and materials, and to change or discontinue models.*

1968 Dodge Full Line Catalog • 81-205-8041 • Litho in U.S.A. 11/67.



# Dodge

